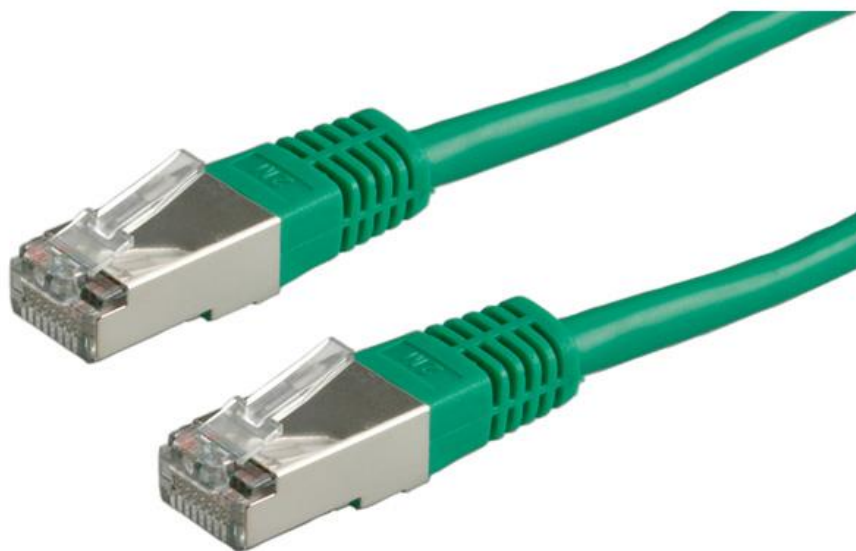




Datenblatt - Fiche technique - Data sheet

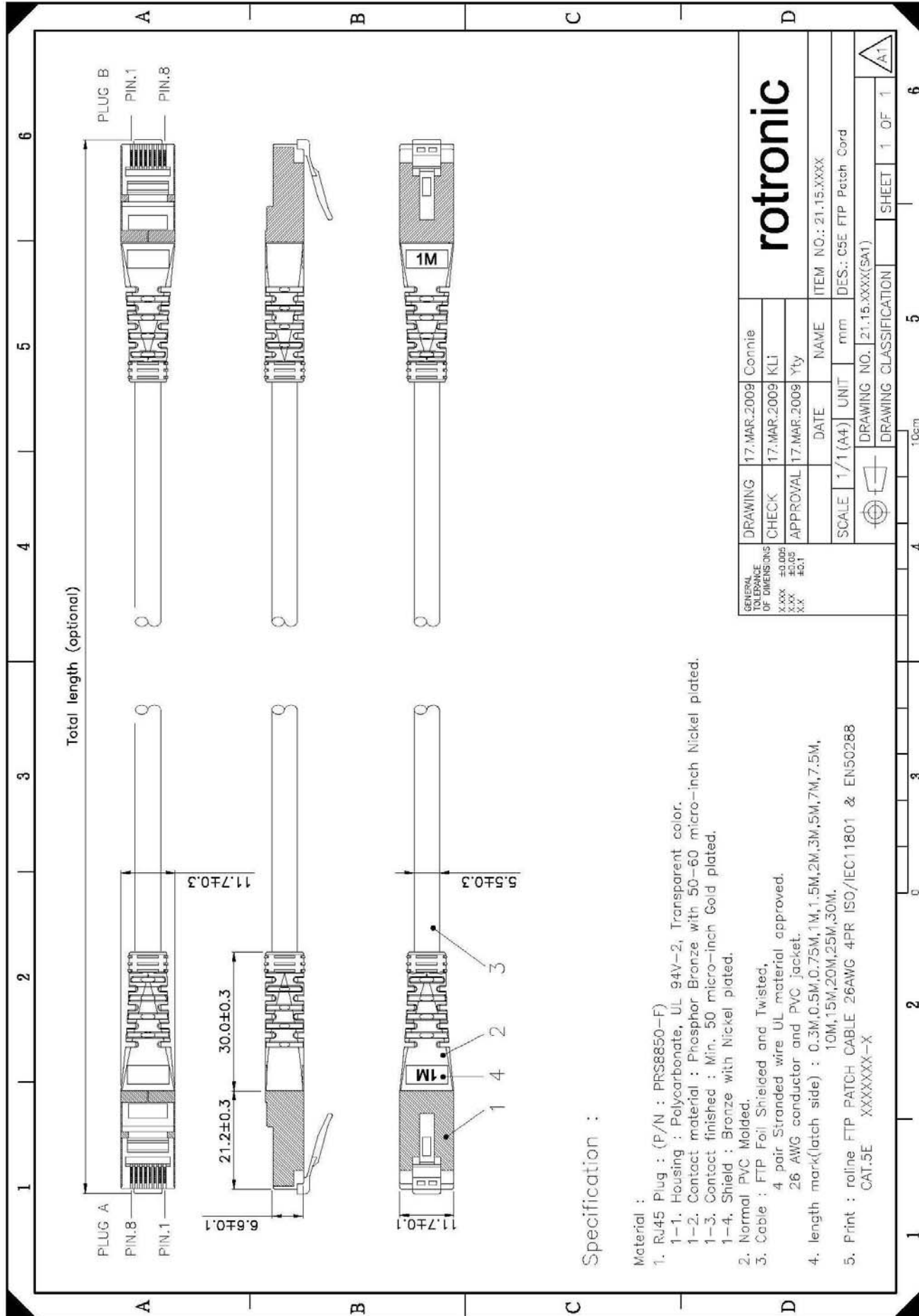
21.15.0163



ROLINE FTP-Patchkabel konf. Kat. 5e, grün, 5,0 m

Cordon ROLINE Cat.5e FTP, vert, 5,0 m

ROLINE FTP Patch Cord Cat.5e, green, 5.0 m



Total length (optional)

Specification :

- Material :
1. RJ45 Plug : (P/N : PRS8850-F)
 - 1-1. Housing : Polycarbonate, UL 94V-2, Transparent color.
 - 1-2. Contact material : Phosphor Bronze with 50-60 micro-inch Nickel plated.
 - 1-3. Contact finished : Min. 50 micro-inch Gold plated.
 - 1-4. Shield : Bronze with Nickel plated.
 2. Normal PVC Molded.
 3. Cable : FTP Foil Shielded and Twisted,
 - 4 pair Stranded wire UL material approved.
 - 26 AWG conductor and PVC jacket.
 4. length mark(latch side) : 0.3M,0.5M,0.75M,1M,1.5M,2M,3M,5M,7M,7.5M, 10M,15M,20M,25M,30M.
 5. Print : roline FTP PATCH CABLE 26AWG 4PR ISO/IEC11801 & EN50288
CAT.5E XXXXXX-X

GENERAL TOLERANCE OF DIMENSIONS		DRAWING		17.MAR.2009		Connie	
X.XXX	±0.005	CHECK	17.MAR.2009	KL1			
X.XX	±0.05	APPROVAL	17.MAR.2009	Yty			
X.X	±0.1	DATE		NAME	ITEM NO.: 21.15.XXXX		
		SCALE	1/1 (A4)	UNIT	mm	DES.: C5E FTP Patch Cord	
		DRAWING NO. 21.15.XXXX(SM1)		DRAWING CLASSIFICATION		SHEET 1 OF 1	
		10cm		5		6	

rotronic



21.15.0101	ROLINE FTP Cable Cat.5e, grey, 1.0m	21.15.0182	ROLINE FTP Cable Cat.5e, yellow, 0.5m	21.15.0464	ROLINE FTP Cable Cat.5e, blue, 15m
21.15.0102	ROLINE FTP Cable Cat.5e, grey, 2.0m	21.15.0183	ROLINE FTP Cable Cat.5e, green, 0.5m	21.15.0465	ROLINE FTP Cable Cat.5e, black, 15m
21.15.0103	ROLINE FTP Cable Cat.5e, grey, 3.0m	21.15.0184	ROLINE FTP Cable Cat.5e, blue, 0.5m	21.15.0471	ROLINE FTP Cable Cat.5e, red, 20m
21.15.0107	ROLINE FTP Cable Cat.5e, grey, 7.0m	21.15.0185	ROLINE FTP Cable Cat.5e, black, 0.5m	21.15.0472	ROLINE FTP Cable Cat.5e, yellow, 20m
21.15.0110	ROLINE FTP Cable Cat.5e, grey, 10m	21.15.0200	ROLINE FTP Cable Cat.5e, cross, grey, 0.5m	21.15.0473	ROLINE FTP Cable Cat.5e, green, 20m
21.15.0115	ROLINE FTP Cable Cat.5e, grey, 15m	21.15.0201	ROLINE FTP Cable Cat.5e, cross, grey, 1.0m	21.15.0474	ROLINE FTP Cable Cat.5e, blue, 20m
21.15.0120	ROLINE FTP Cable Cat.5e, grey, 20m	21.15.0202	ROLINE FTP Cable Cat.5e, cross, grey, 2.0m	21.15.0475	ROLINE FTP Cable Cat.5e, black, 20m
21.15.0131	ROLINE FTP Cable Cat.5e, red, 1.0m	21.15.0203	ROLINE FTP Cable Cat.5e, cross, grey, 3.0m		
21.15.0132	ROLINE FTP Cable Cat.5e, yellow, 1.0m	21.15.0205	ROLINE FTP Cable Cat.5e, cross, grey, 5.0m		
21.15.0133	ROLINE FTP Cable Cat.5e, green, 1.0m	21.15.0210	ROLINE FTP Cable Cat.5e, cross, grey, 10m		
21.15.0134	ROLINE FTP Cable Cat.5e, blue, 1.0m	21.15.0215	ROLINE FTP Cable Cat.5e, cross, grey, 15m		
21.15.0135	ROLINE FTP Cable Cat.5e, black, 1.0m	21.15.0220	ROLINE FTP Cable Cat.5e, cross, grey, 20m		
21.15.0141	ROLINE FTP Cable Cat.5e, red, 2.0m	21.15.0221	ROLINE FTP Cable Cat.5e, cross, red, 0.5m		
21.15.0142	ROLINE FTP Cable Cat.5e, yellow, 2.0m	21.15.0231	ROLINE FTP Cable Cat.5e, cross, red, 1.0m		
21.15.0143	ROLINE FTP Cable Cat.5e, green, 2.0m	21.15.0241	ROLINE FTP Cable Cat.5e, cross, red, 2.0m		
21.15.0144	ROLINE FTP Cable Cat.5e, blue, 2.0m	21.15.0251	ROLINE FTP Cable Cat.5e, cross, red, 3.0m		
21.15.0145	ROLINE FTP Cable Cat.5e, black, 2.0m	21.15.0261	ROLINE FTP Cable Cat.5e, cross, red, 5.0m		
21.15.0151	ROLINE FTP Cable Cat.5e, red, 3.0m	21.15.0271	ROLINE FTP Cable Cat.5e, cross, red, 10m		
21.15.0152	ROLINE FTP Cable Cat.5e, yellow, 3.0m	21.15.0281	ROLINE FTP Cable Cat.5e, cross, red, 15m		
21.15.0153	ROLINE FTP Cable Cat.5e, green, 3.0m	21.15.0291	ROLINE FTP Cable Cat.5e, cross, red, 20m		
21.15.0154	ROLINE FTP Cable Cat.5e, blue, 3.0m	21.15.0451	ROLINE FTP Cable Cat.5e, red, 10m		
21.15.0155	ROLINE FTP Cable Cat.5e, black, 3.0m	21.15.0452	ROLINE FTP Cable Cat.5e, yellow, 10m		
21.15.0161	ROLINE FTP Cable Cat.5e, red, 5.0m	21.15.0453	ROLINE FTP Cable Cat.5e, green, 10m		
21.15.0162	ROLINE FTP Cable Cat.5e, yellow, 5.0m	21.15.0454	ROLINE FTP Cable Cat.5e, blue, 10m		
21.15.0163	ROLINE FTP Cable Cat.5e, green, 5.0m	21.15.0455	ROLINE FTP Cable Cat.5e, black, 10m		
21.15.0164	ROLINE FTP Cable Cat.5e, blue, 5.0m	21.15.0461	ROLINE FTP Cable Cat.5e, red, 15m		
21.15.0165	ROLINE FTP Cable Cat.5e, black, 5.0m	21.15.0462	ROLINE FTP Cable Cat.5e, yellow, 15m		
21.15.0181	ROLINE FTP Cable Cat.5e, red, 0.5m	21.15.0463	ROLINE FTP Cable Cat.5e, green, 15m		

Remark#

CATEGORY 5E F/UTP PATCH CABLE 4 PAIR



Category 5E F/UTP cables are designed to meet the most advanced F/UTP cable applications. Tested to 100 MHz, the guaranteed performance of this cable meets the ISO/IEC 11801 and EN50288 requirements for PS-NEXT, attenuation, return loss, attenuation-to-crosstalk ratio (ACR) and impedance, making it ideal for high-end transmission links supporting today's networking protocols

CONSTRUCTION

26 AWG bare copper wire insulated with polyethylene. Two insulated conductors twisted together to form a pair and four such pairs cabled to form the basic unit jacketed with flame-retardant PVC.

STANDARDS

International	ISO/IEC 11801
European	EN50288

FLAME RATING

UL 444 CM, CMR

APPLICATIONS

Category 5E F/UTP cable is intended for high speed data applications including:

IEEE 802.3 1000BASE-T, 10BASE-T, 155 Mb/s ATM, 4/16 Mb/s Token Ring

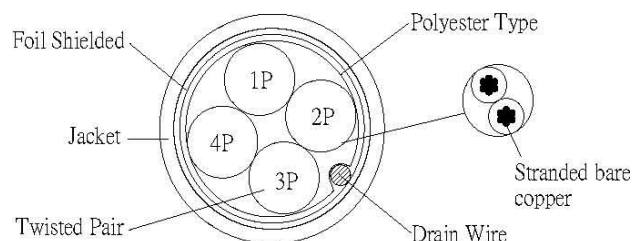
FEATURES

- Specified and tested to 100 MHz
- Small, round design pairs

BENEFITS

- Reliably supports today's network protocols
- Reduced installation costs and maintenance
- Lower Bit Error Rates, increases network efficiency and uptime

CATEGORY 5E F/UTP PATCH CABLE 4 PAIR



Construction

Twisted Pairs Color Code:

1. PAIR 1: Blue, White/Blue
2. PAIR 2: Orange, White/Orange
3. PAIR 3: Green; White/Green
4. PAIR 4: Brown; White/Brown

Component

1. Conductor: AWG 26
2. Insulators: HDPE (Min. Thickness 0.153, Min. Avg. thickness 0.178)
3. Insulators Diameter: Blue & White/Blue: $0.81 \pm 0.02\text{mm}$
4. Mylar Tape: $20 \times 0.02 \pm 0.01$
5. Al-Mylar Tape: $20 \times 0.038 \pm 0.002$
6. Jacket: 75°C PVC (Min. Thickness 0.58, Min. Avg. thickness 0.46)
7. Jacket Diameter: $5.3 \pm 0.2\text{mm}$

Marking

F/UTP PATCH CABLE 26AWG 4PR 75°C (UL) E178558 CM rated
 ISO/IEC11801 & EN50288 CAT.5E XXXXXX-X
 or customization

Physical Characters

Un-aged:

1. Tensile strength: Polyolefin 2400PSI, Jacket (PVC) 2000PSI
2. Elongation: Polyolefin 300% min. Jacket (PVC) 100% min

After Aging:

1. Tensile strength: Polyolefin 75%min. Jacket (PVC) 85% min
2. Elongation: Polyolefin 75%min. Jacket (PVC) 50% min

Electric Characters

1. Voltage rating: 300V
2. Temperature rating: 75°C
3. Dielectric strength: DC 2.5 KV / 2sec. or AC1.75 KV / 2sec.
4. Mutual Capacitance: 5.6 nF/100M nom.
5. Pair to ground : 330pF/100m max
6. Conductor DC resistance: 142 Ohms/km max. at 20°C.
7. DC Resistance Unbalance: 5% max.
8. Characteristic Impedance: 100 ± 15 Ohms 1~100MHz
9. Propagation Delay skew: 45ns/100m max. 1~100MHz
10. Velocity of Propagation: 70%

FREQ	Attenuation	NEXT	RL	PSNEXT	ELFEXT	PSELFEXT	DELAY
MHz	(max. dB/100m)	(min. dB)	(min. dB at 20°C)	(min. dB)	(min. dB)	(min. dB)	(max. ns at 20°C)
1	2.9	65.3	20.0	62.3	63.0	60.8	570.2
4	5.9	56.3	23.0	53.3	51.7	48.7	552.0
8	8.4	51.8	24.5	48.8	45.7	42.7	546.7
10	9.4	50.3	25.0	47.3	43.8	40.8	545.0
16	11.8	47.2	25.0	44.4	39.7	36.7	543.0
20	13.3	45.8	25.0	42.8	37.7	34.7	542.0
25	15.0	44.3	24.2	41.3	35.8	32.8	541.2
31.25	16.8	42.9	23.3	39.9	33.9	30.9	540.4
62.50	24.5	36.4	20.7	35.4	27.8	24.8	538.6
100	31.7	35.3	19.0	32.3	23.8	20.8	538.0
200	-	-	-	-	-	-	-
250	-	-	-	-	-	-	-